

TRAIL RUNNING

	GOLDEN GATE KIMA RT	GOLDEN GATE 2 ATR	GOLDEN GATE ATR GTX	SPIN ST	SPIN ULTRA	SPIN INFINITY	SPIN PLANET	RIBELLE® RUN	RIBELLE® RUN GTX	RIBELLE® RUN XT	RIBELLE® RUN XT GTX	RIBELLE® RUN KALIBRA HT	RIBELLE® RUN KALIBRA G
													
DISTANCE													
TERRAIN	T · RT	R · G · T	R · G · T	T · RT	G · T · RT	G · T · RT	G · T · RT	G · T · RT	G · T · RT	T · RT	T · RT	G · T · RT	G · T · RT
PERFORMANCE RATING													
STACK / DROP													
WATERPROOF	No	No	GORE-TEX® Invisible Fit Technology	No	No	No	No	No	GORE-TEX® Invisible Fit Technology	No	GORE-TEX® Invisible Fit Technology	No	Polartec Windbloc®
UPPER	Mesh / PU Film / Micro Nubuck	Mesh / Bio Print / Microfiber	Mesh / PU Film / Micro Nubuck	Mesh / Microfiber / TPU - 95% Recycled	Mesh / PU Film / Micro Nubuck	Mesh / PU Film / Micro Nubuck	Recycled Mesh + Recycled Microfiber	Fabric + Film	Mesh / PU Film / Micro Nubuck	Mesh / PU / TPU 60% Recycled	Mesh / PU / TPU 60% Recycled	Recycled Mesh w/ Welded PU Overlay	Water Repellant Fabric + PU + Wintherm®
MIDSOLE	2D EVA-CM	2D EVA-CM	2D EVA	EVA-CM	2D EVA-CM	2D EVA-CM	EVA 45% Recycled	EVA	2D EVA-CM	2D EVA	2D EVA	EVA-CM	EVA-CM
OUTSOLE	PRESA® TRN-02 / SuperGum + Waterlock	PRESA® TRN-07 / SuperGum	PRESA® TRN-02 / SuperGum	Vibram® / Fixion ST	Vibram® Velox LB Max / Megagrip	Vibram® Velox Cross / Megagrip	PRESA® TRN-06 30% Recycled	PRESA® TRN-01 / SuperGum	PRESA® TRN-01 / SuperGum	PRESA® TRN-05 / SuperGum	PRESA® TRN-05 / SuperGum	PRESA® TRN-01 / SuperGum	PRESA® TRN-04 / H-Compound
WEIGHT	290g; 10.2oz 255g; 9.0oz	255g; 9.0oz 215g; 7.6oz	305g; 10.8oz 270g; 9.5oz	260g; 9.2oz 210g; 7.9oz	290g; 10.2oz 250g; 8.8oz	305g; 10.8oz 255g; 9.0oz	290g; 10.2oz 260g; 9.2oz	280g; 9.9oz 245g; 8.6oz	310g; 10.9oz 260g; 9.2oz	355g; 12.5oz 295g; 10.4oz	365g; 12.8oz 300g; 10.5oz	310g; 10.9oz 260g; 9.2oz	370g; 13.0oz
SPECIAL FEATURES													
NOTES		Available Spring 2024					New Colors Available Spring 2024					Available Spring 2024	

Terrain: R= Road, G=Gravel, T=Trail, RT=Rough Trail

*Where two pairs of shoes are present, the women's models are shown below the men's

SPECIAL FEATURES



VIBRAM®

VIBRAM is the world leader in high performance rubber soles, always produced with three objectives: to guarantee the best performance, provide the maximum level of comfort and to maintain quality over time.



PRESA®

Each PRESA® sole is carefully developed thinking about the context of use of the shoe. The compounds are specifically designed for the outdoor world, for maximum performance in all weather conditions and on all types of terrain without compromising durability.



GORE-TEX® INVISIBLE FIT TECHNOLOGY

Invisible Fit features a direct-lamination construction method, where the membrane is laminated directly to the back of the shoe's upper. This offers significant advantages. The waterproof membrane closer to the outside surface reduces water absorption into the upper materials, keeping moisture weight uptake lower and breathability higher. This allows for standard lining construction, improving the internal comfort, flexibility and overall fit of the product.



POLARTEC WINDBLOC®

Polartec Windbloc® provides maximum weather protection from wind, water and cold conditions. It features a unique stretch polyurethane membrane sandwiched between the outer face fabric and inner lining fabric, creating a combination that holds strong against the harshest elements, while still allowing moisture vapor to permeate outside. Windbloc's membrane blocks outside moisture and airflow at the microscopic level to guarantee weather protection. This durable membrane is capable of resilient stretch for greater range of motion during activity, even in inclement conditions.



EXO

The EXO construction system features a microfiber containment structure that is thermally welded to the back of the upper, providing lightweight support and wrapping of the midfoot, enhancing fit and lateral stability with minimal weight added.



ORTHOLITE® FOOTBED

The footbed is made of Ortholite X40 Eco foam. Ortholite is an open-cell PU foam with great resistance to compression set (less than 5% compression set). The open-cell PU foam structure provides exceptional breathability, and the formulation also includes 5% recycled rubber content as well, providing enhanced rebound while lowering the impact on the planet at the same time.



BOA® WRAP 360

The patent-pending, Wrap360 performance fit system is powered by BOA li2 Li2 dial, and TX4 textile lace with Dyneema. The it system closes over the instep like a traditional system, but then also wraps behind the heel resulting in a great mid foot wrap and heel pocket hold. The TX4 lace is much softer than steel cable, and contains Dyneema for lightweight strength. The Li2 dial features micrometrical adjustment both clockwise and counter clockwise, making it easy to fine tune the fit, even with gloves on.



SOCK-FIT TECHNOLOGY

An innovative technology, exclusive to SCARPA, SOCK-FIT is constructed with the tongue as a single piece of elastic fabric that wraps over the top of the foot, which offers a snug mid-foot fit and additional lateral stability, while at the same time reducing weight and bulk.

SCARPA SUSTAINABILITY

SCARPA ECO PRODUCTS

Our products tread the most wonderful and unspoiled landscapes on earth. We feel we must do our best to preserve these landscapes. "ECO", products made of environment-friendly materials refers to products in which materials and processes are specifically chosen for their environmentally friendly characteristics.



TRAIL RUNNING OUTSOLES

PRESA

TRN-01



Medium density EVA midsole for long-lasting cushioning

Stack
Heel 24.5 mm / Toe 20.5 mm
Drop 4mm



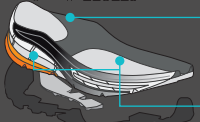
PRESA® outsole in SuperGum rubber compound for increased traction and friction



● PROPULSION AREA
● BRAKING AREA
● MAXIMUM GRIP AREA
● STABILITY AREA

PRESA

TRN-02



Midsole - medium/high density EVA for support and thrust response

Stack
Heel 28 mm / Toe 24 mm
Drop 4mm



Midsole - low density EVA for shock-absorption

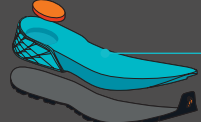


PRESA® outsole in SuperGum rubber compound for excellent grip on road or trail

● PROPULSION AREA
● BRAKING AREA
● MAXIMUM GRIP AREA
● STABILITY AREA

PRESA

TRN-04



Midsole - medium density EVA for long-lasting cushioning

Stack
Heel 24.5 mm / Toe 20.5 mm
Drop 6mm



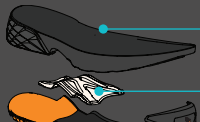
PRESA® Outsole in H-Compound rubber for increased traction and friction in the cold and wet



● PROPULSION AREA
● BRAKING AREA
● MAXIMUM GRIP AREA
● STABILITY AREA

PRESA

TRN-05



Active Foam midsole in medium density EVA for stability and thrust response

Stack
Heel 28.5mm / Toe 22.5mm
Drop 6mm



Ergonomic shank gives support and stability on the arch and help support the roll transition on every step

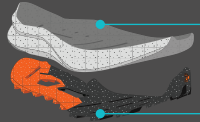
PRESA® Outsole with ATR compound which combines high grip and durability



● PROPULSION AREA
● BRAKING AREA
● MAXIMUM GRIP AREA
● STABILITY AREA

PRESA

TRN-06



High volume cushioned midsole in medium density EVA for stability and thrust response - 50% recycled rubber

Stack
Heel 28mm / Toe 24mm
Drop 4mm



PRESA® Outsole with ATR compound which combines high grip and durability - 30% recycled rubber



● PROPULSION AREA
● BRAKING AREA
● MAXIMUM GRIP AREA
● STABILITY AREA

PRESA

TRN-07



Medium/high density EVA for support and thrust response

Stack
Heel 28mm / Toe 24mm
Drop 4mm



Bounce foam for low density midsole for shock-absorption and rebound

Rubber outsole with SuperGum ATR compound, excellent grip and durability on mixed terrain

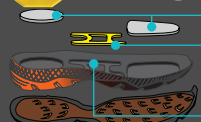


Vertical grooves for cushioning and controlled compression



● PROPULSION AREA
● BRAKING AREA
● MAXIMUM GRIP AREA
● STABILITY AREA

VELOX LB MAX



Low Density EVA heel inserts for cushioning

Stack
Heel 24mm / Toe 18mm
Drop 6mm

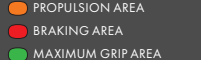


Ergonomic ESS shank for anti-torsional control

Medium Density EVA heel inserts for stability

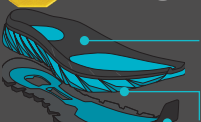
Vibram® Litebase rubber base is 40-50% slimmer, Tred is 30% lighter

Vibram® Megagrip rubber compound for high grip on every terrain



● PROPULSION AREA
● BRAKING AREA
● MAXIMUM GRIP AREA
● STABILITY AREA

VELOX CROSS



Foot Stabilizer Control System in medium density EVA for extra stability and torsion control

Stack
Heel 26mm / Toe 22mm
Drop 4mm



Low density EVA midsole base for maximum cushioning

Vibram® Megagrip rubber compound for increased traction and friction



● PROPULSION AREA
● BRAKING AREA
● MAXIMUM GRIP AREA
● STABILITY AREA



SCARPA NORTH AMERICA, INC. | BOULDER, CO, USA
FOR MORE INFORMATION VISIT [US.SCARPA.COM](https://us.scarpa.com)



TRAIL RUNNING SHOES
COMPARISON CHART 2024

TRAIL RUNNING SHOES COMPARISON CHART 2024

