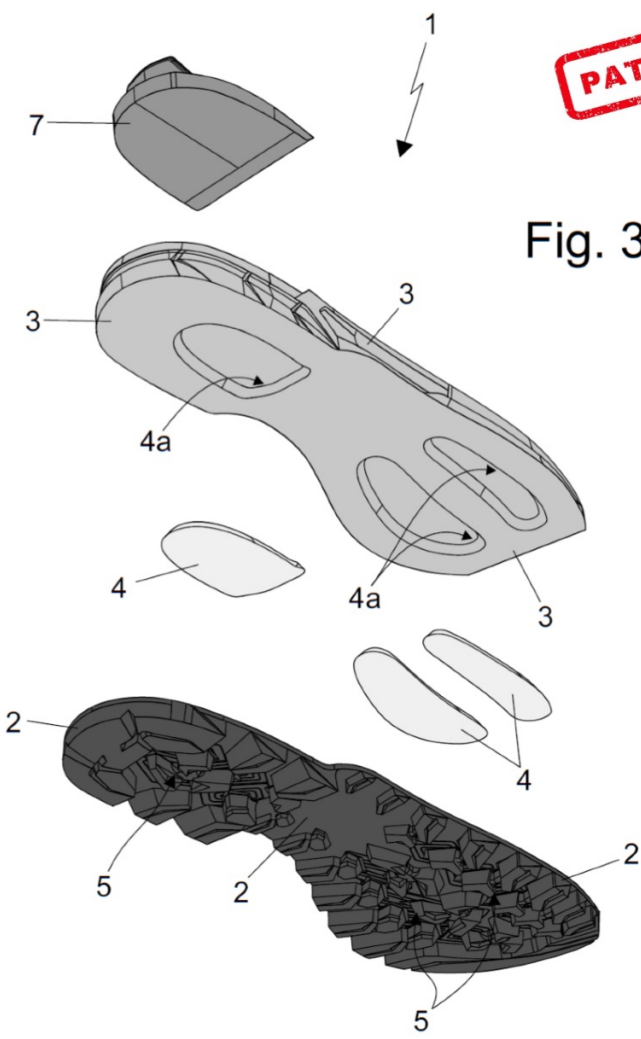
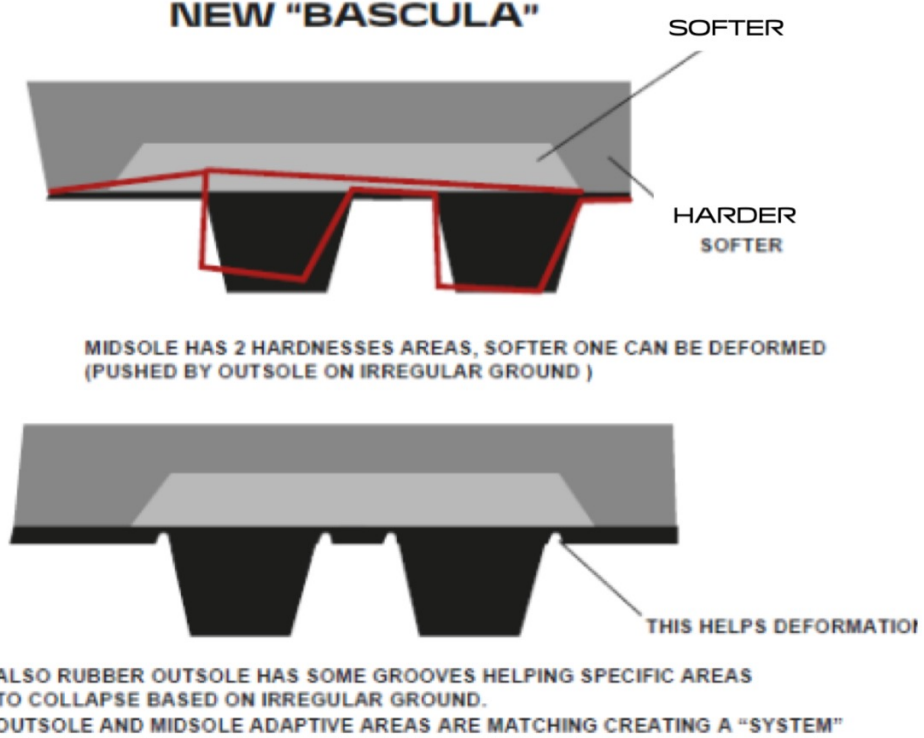


# BAS - TECHNOLOGY

## INNOVATION



**PATENT PENDING**

Fig. 3

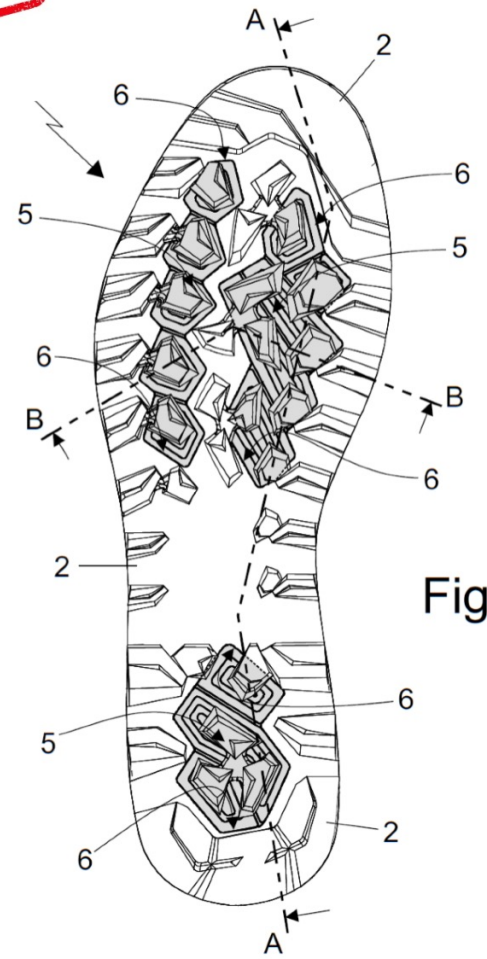
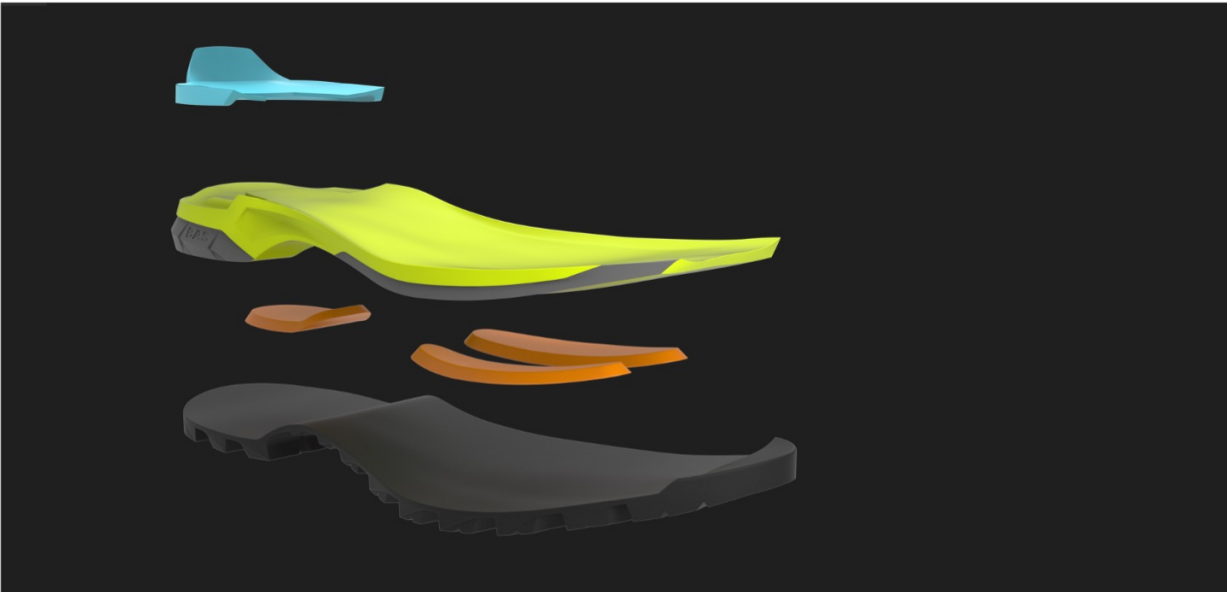


Fig. 4

# BAS - TECHNOLOGY

## INNOVATION



THE OUTSOLES ADAPTS TO TERRAIN BALANCING THE IRREGULAR SURFACES:  
ADHESION (GRIP) IS MAINTAINED AND THE STABILITY OF THE FOOT IS INCREASED

