

TRAIL RUNNING

	GOLDEN GATE 2 ATR	SPIN PLANET	SPIN ULTRA 2	SPIN ST	RIBELLE RUN® 2	RIBELLE RUN® 2 GTX	RIBELLE® RUN KALIBRA G
DISTANCE							
TERRAIN	R · G · T	G · T · RT	G · T · RT	T · RT	G · T · RT	G · T · RT	G · T · RT
PERFORMANCE RATING							
STACK / DROP	Drop 4mm 	Drop 4mm 	Drop 4mm 	Drop 4mm 	Drop 4mm 	Drop 4mm 	Drop 4mm
WATERPROOF	No	No	No	No	No	GORE-TEX® ePE (PFAS Compliant)	Polartec Windbloc®
UPPER	Mesh / Bio Print / Microfiber	Recycled Mesh + Recycled Microfiber	Recycled Mesh + BIO Based TPU Print	Mesh / Microfiber / TPU - 95% Recycled	Mesh with Bio-Based Print Overlay	Mesh with Bio-Based Print Overlay	Water Repellent Fabric + PU + Wintherm®
MIDSOLE	CM-EVA Bounce Foam	CM-EVA 45% Recycled	SC-TPEE Spring Foam	CM-EVA Bounce Foam	SC-EVA Bounce Foam+	SC-EVA Bounce Foam+	CM-EVA
OUTSOLE	PRESA® TRN-07 / SuperGum	PRESA® TRN-06 30% Recycled	Vibram® Velox Max 2 / MegaGrip	Vibram® / Fixion ST	PRESA® TRN-10 / SuperGum	PRESA® TRN-10 / SuperGum	PRESA® TRN-04 / H-Compound
*WEIGHT	(M) 255g; 9.0oz (W) 215g; 7.6oz	(M) 290g; 10.2oz (W) 260g; 9.2oz	290g; 10.2oz 250g; 8.8oz	(M) 260g; 9.2oz (W) 215g; 7.4oz	(M) 290g; 10.2oz (W) 250g; 8.8oz	(M) 325g; 11.4oz (W) 285g; 10oz	370g; 13.0oz
SPECIAL FEATURES							
NOTES		New Colors Available Spring 2025	Available Spring 2025		Available Spring 2025	Available Fall 2025	

Terrain: R= Road, G=Gravel, T=Trail, RT=Rough Trail

*Where two pairs of shoes are present, the women's models are shown below the men's

PERFORMANCE RATING, EXPLAINED

Lightness
The combination of upper and sole materials of different thicknesses determine the weight characteristic of the trail running shoe in relation to its category of use.

Cushioning
Sole features that offer impact absorption effect on the ground.

Rebound
Characteristics of the sole designed to offer an elastic effect of energy return after stepping on uneven ground.

Protection
Areas of the shoe that have specific support to offer safety to the foot during use on rough terrain.

Support
Ability of the shoe to protect from impacts on certain areas of the foot.

Traction
The outsole is designed to guarantee grip on different types of terrain, both in dry and wet conditions.

SPECIAL FEATURES



VIBRAM®

VIBRAM is the world leader in high performance rubber soles, always produced with three objectives: to guarantee the best performance, provide the maximum level of comfort and to maintain quality over time.



PRESA®

Each PRESA® sole is carefully developed thinking about the context of use of the shoe. The compounds are specifically designed for the outdoor world, for maximum performance in all weather conditions and on all types of terrain without compromising durability.



Gore-Tex® ePE TECHNOLOGY

GORE-TEX® ePE is a revolutionary waterproof, breathable material that is light, strong, and PFAS-free. It sets a new standard for storm protection while lowering carbon footprints with a lighter membrane and textiles made with recycled content.



POLARTEC WINDBLOC®

Polartec Windbloc® offers maximum protection against wind, water, and cold. Its stretch polyurethane membrane, placed between outer and inner fabrics, blocks moisture and airflow while allowing vapor to escape. Durable and stretchy, it ensures weatherproof comfort and freedom of movement in harsh conditions.



EXO

The EXO construction system features a microfiber containment structure that is thermally welded to the back of the upper, providing lightweight support and wrapping of the midfoot, enhancing fit and lateral stability with minimal weight added.



ORTHOLITE® FOOTBEDS

Ortholite® footbeds feature Ortholite® X40 Eco foam, an open-cell PU foam with under 5% compression set for lasting comfort. Its breathable structure includes 5% recycled rubber, offering enhanced rebound while reducing environmental impact.



BOA® WRAP 360

The patent-pending Wrap360 fit system, powered by the BOA Li2 dial and TX4 lace with Dyneema, provides excellent midfoot and heel hold. The TX4 lace is softer than steel and lightweight yet strong. The Li2 dial allows precise adjustments in both directions, even with gloves on, for a perfect fit.



SOCK-FIT TECHNOLOGY

An innovative technology, exclusive to SCARPA, SOCK-FIT is constructed with the tongue as a single piece of elastic fabric that wraps over the top of the foot, which offers a snug mid-foot fit and additional lateral stability, while at the same time reducing weight and bulk.

SCARPA SUSTAINABILITY

SCARPA ECO PRODUCTS



Our products traverse the world's most pristine landscapes, inspiring us to help preserve them. "ECO" products are crafted with environmentally friendly materials and processes, chosen specifically for their minimal environmental impact.

TRAIL RUNNING OUTSOLES



TRN-04



Midssole - medium density EVA for long-lasting cushioning

Stack
Heel 26.5 mm / Toe 22.5 mm
Drop 4mm



PRESA® Outsole in H-Compound rubber for increased traction and friction in the cold and wet



- PROPULSION AREA
- BRAKING AREA
- MAXIMUM GRIP AREA
- STABILITY AREA



TRN-06



High volume cushioned midssole in medium density EVA for stability and thrust response - **20%** **20%**

Stack
Heel 28mm / Toe 24mm
Drop 4mm



PRESA® Outsole with ATR compound which combines high grip and durability - **20%** **20%**



- PROPULSION AREA
- BRAKING AREA
- MAXIMUM GRIP AREA
- STABILITY AREA



TRN-07



Medium high density EVA for support and thrust response



Bounce foam for low density midssole for shock-absorption and rebound



Rubber outsole with SuperGum ATR compound, excellent grip and durability on mixed terrain



Vertical grooves for cushioning and controlled compression

- PROPULSION AREA
- BRAKING AREA
- MAXIMUM GRIP AREA
- STABILITY AREA



TRN-10



Midssole - medium density Super Critical EVA for long-lasting cushioning



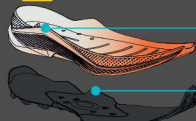
PRESA® Outsole in H-Compound rubber for increased traction and friction



- PROPULSION AREA
- BRAKING AREA
- MAXIMUM GRIP AREA
- STABILITY AREA



VELOX MAX 2



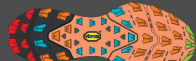
Medium density Super Critical TPEE midssole for long-lasting cushioning



Vibram® rubber outsole with Megagrip rubber for excellent grip and adaptability on all types of terrain



Lateral and medial geometry for foot containment and support



Outsole with lateral geometry that extends up the side for protection and support

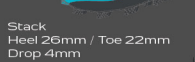
- PROPULSION AREA
- BRAKING AREA
- MAXIMUM GRIP AREA
- STABILITY AREA



FIXION ST



EVA midssole for shock-absorption



Flexible TPU insert for protection and stability



Vibram® outsole with Megagrip rubber and Traction Lug Technology for high grip and performance on soft terrain



Designed for flexibility and propulsion

- PROPULSION AREA
- BRAKING AREA
- MAXIMUM GRIP AREA
- STABILITY AREA

TRAIL RUNNING SHOES



SCARPA NORTH AMERICA, INC. | BOULDER, CO, USA
FOR MORE INFORMATION VISIT US.SCARPA.COM

TRAIL RUNNING SHOES
COMPARISON CHART 2025